



# SERVICE MANUAL



## **MP8<sup>DX</sup>** 400+200 Watt 8 Channel Powered Mixer

WEB ACCESS: <http://www.yorkville.com>

### WORLD HEADQUARTERS CANADA

**Yorkville Sound**  
550 Granite Court  
Pickering, Ontario  
L1W-3Y8 CANADA

Voice: (905) 837-8481  
Fax: (905) 837-8746

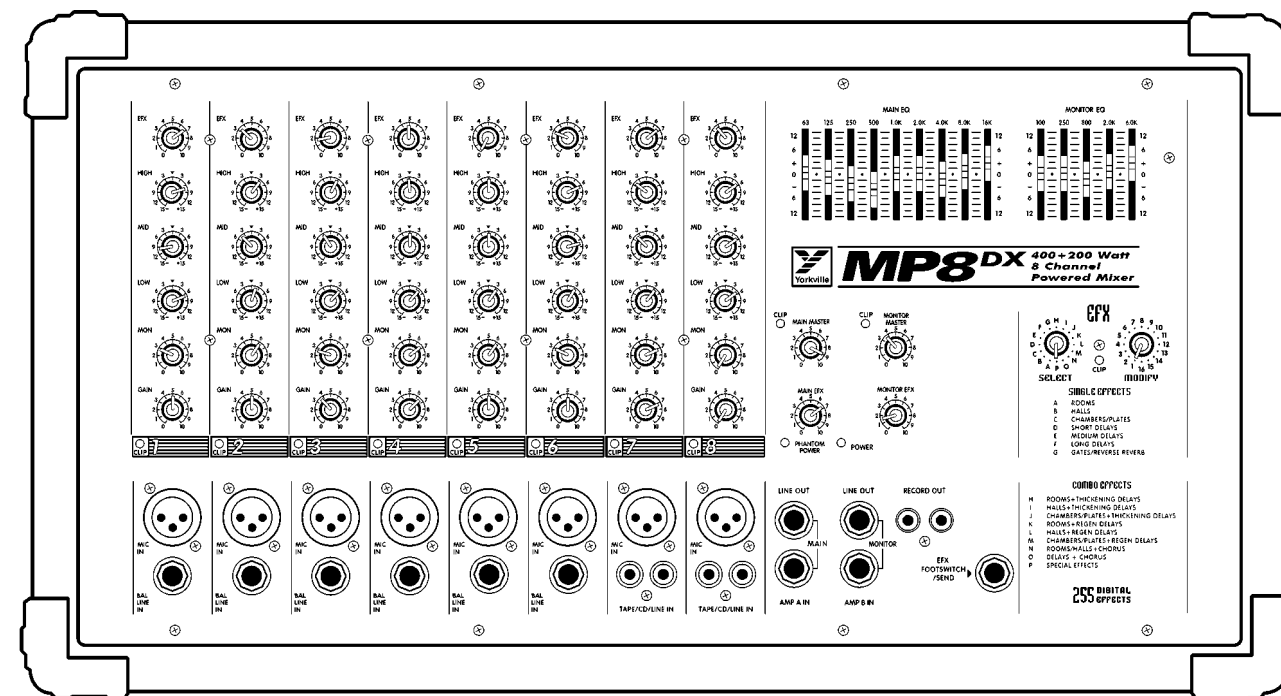
### U.S.A.

**Yorkville Sound Inc.**  
4625 Witmer Industrial Estate  
Niagara Falls, New York  
14305 USA

Voice: (716) 297-2920  
Fax: (716) 297-3689

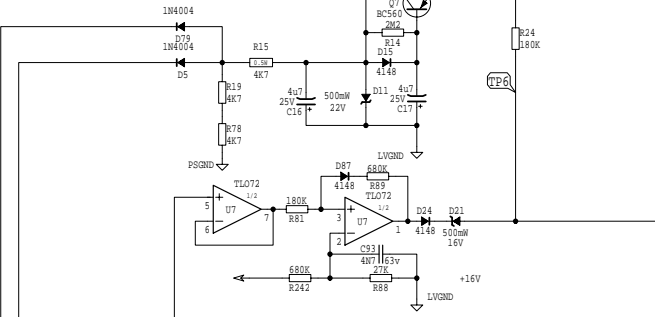


**Quality and Innovation Since 1963**  
Printed in Canada

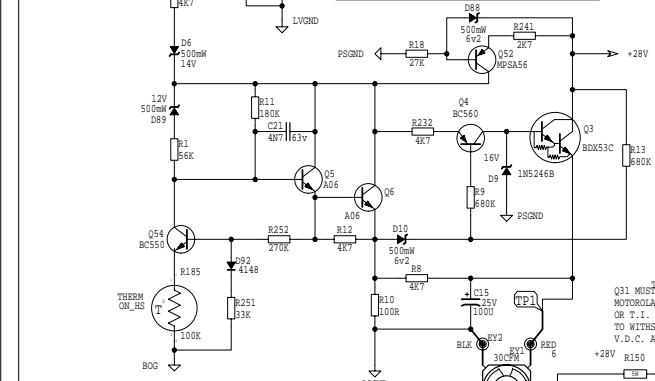




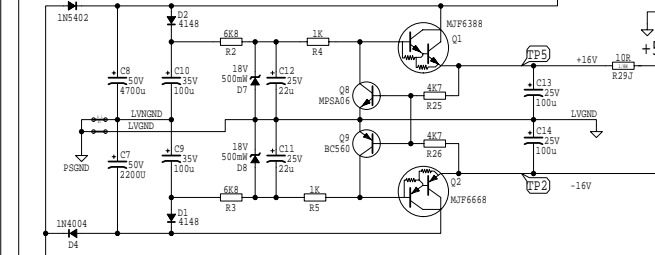
FET TURN ON/OFF CIRCUIT



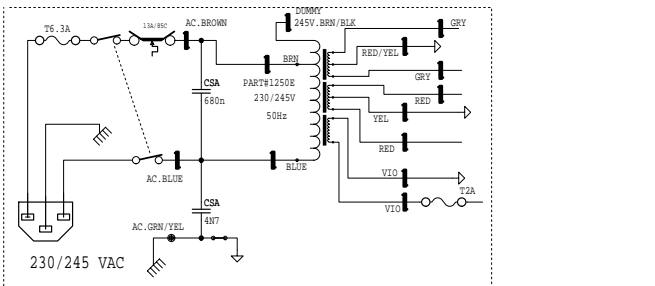
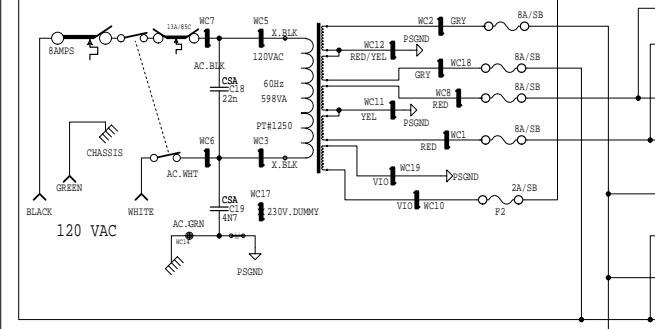
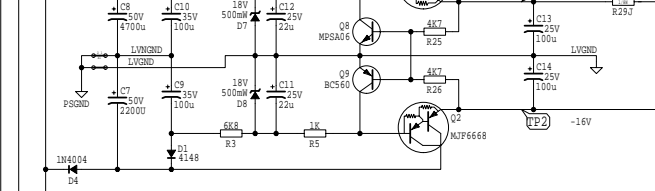
FAN SPEED CONTROL CIRCUIT



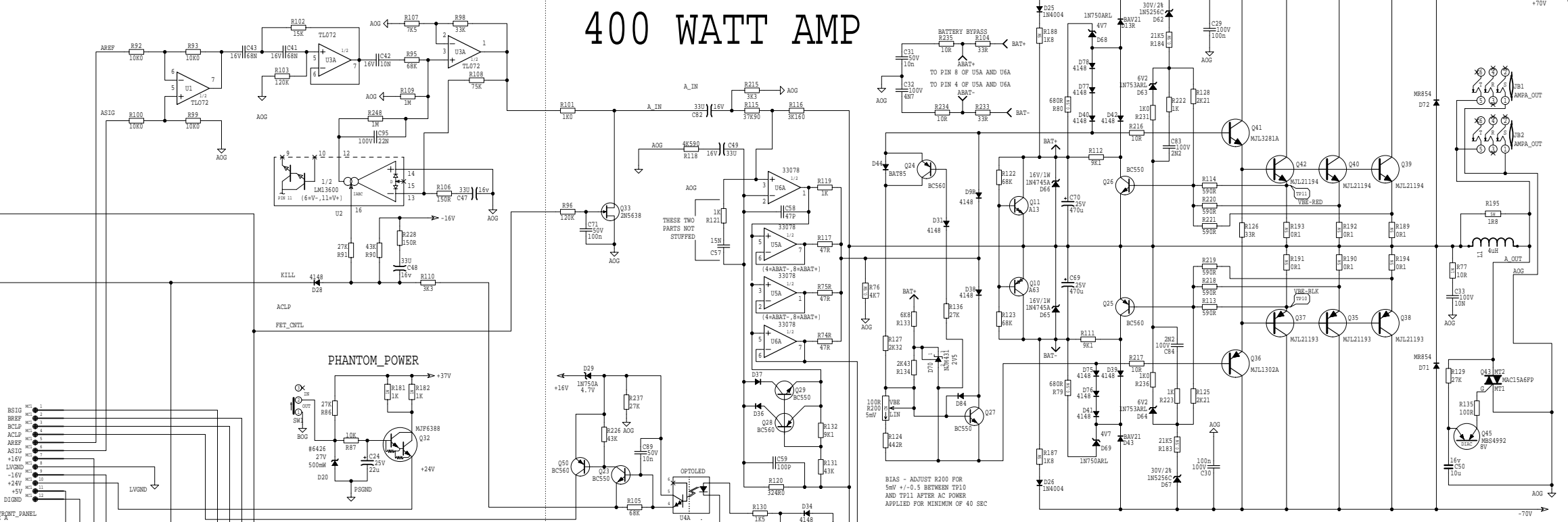
+/- 16 VOLT POWER SUPPLY



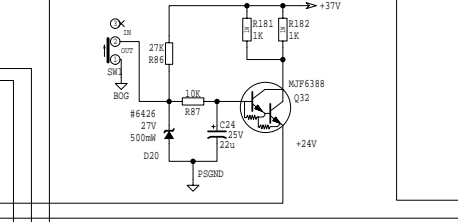
+5V SUPPLY



400 WATT AMP



PHANTOM POWER



NOTES:  
ALL UNMARKED DIODES ARE 1N4148  
BIAS-ADJUST R200 FOR 5-6mv  
BETWEEN TP10 AND TP11, AFTER  
AC POWER IS APPLIED FOR A MINIMUM  
OF 40 SECONDS

M1093.SCH\_DATABASE\_HISTORY

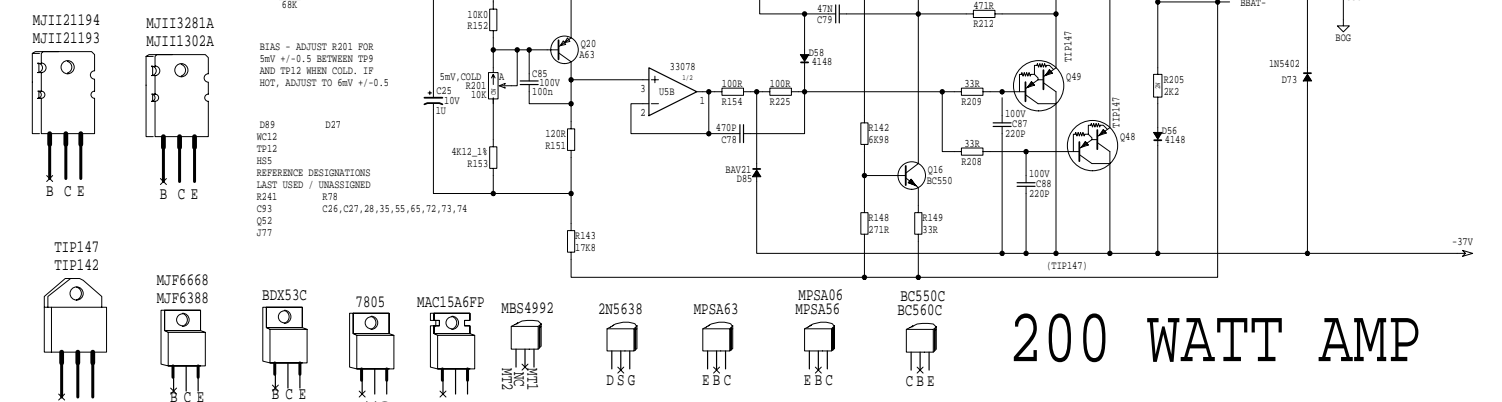
#	DATE	VER#	DESCRIPTION OF CHANGE
1	NOV/25/95	1.30	PCN4971 ADD R243,R244,R245,R246,C35 TO SUPPLY CIRCUIT FOR USB
2	DEC/04/95	1.40	PCN4973 R153, R205->R412
3	DEC/11/95	1.40	PCN4973 R153, R205->R412
4	JAN/08/96	1.60	CORRECT SW ON NA PWR SUPPLY
5	FEB/05/96	1.70	ADD 1N4148 TO PINS 4 OF U2
6	JUN/02/97	1.80	PCN5397 CHANGE BIAS SETTING
7	MAY/24/97	1.90	CORRECTING SW PWR SUPPLY
8	FEB/04/98	2.00	PCN5588 R111,190K->18K

M1093.SCH\_DATABASE\_HISTORY

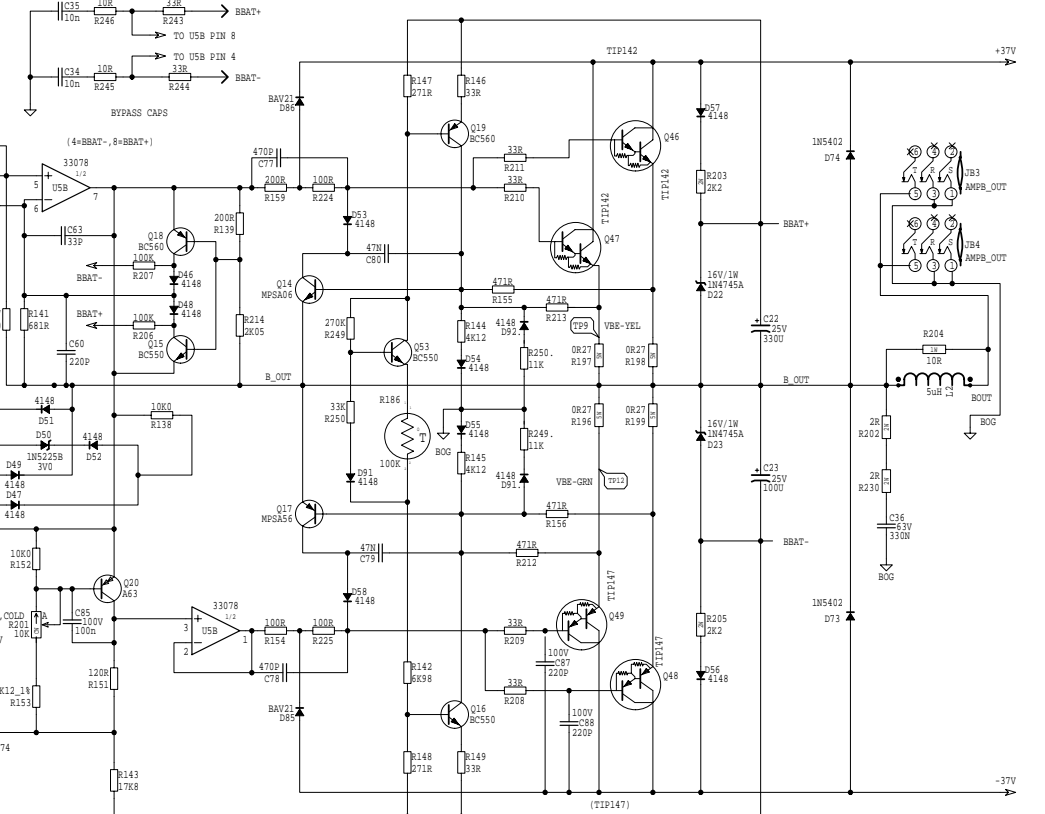
#	DATE	VER#	DESCRIPTION OF CHANGE
1	NOV/02/98	2.10	TRANSFORMER WINDING UPDATED
2	AUG/12/98	2.20	PCN5150 NA PWR SUPPLY->24-08
3	FEB/10/99	2.30	PCN4973 R153, R205->R412
4	MAY/21/99	2.40	PCN5481 CORRECTING PWR SUPPLY
5	OCT/20/99	2.50	PCN4148 ADD R249,R250,D91,D92
6	NOV/29/99	2.60	PCN4148,12A,7805->8A,7805
7	MAY/18/00	2.70	PCN5150 CORRECTING PWR SUPPLY

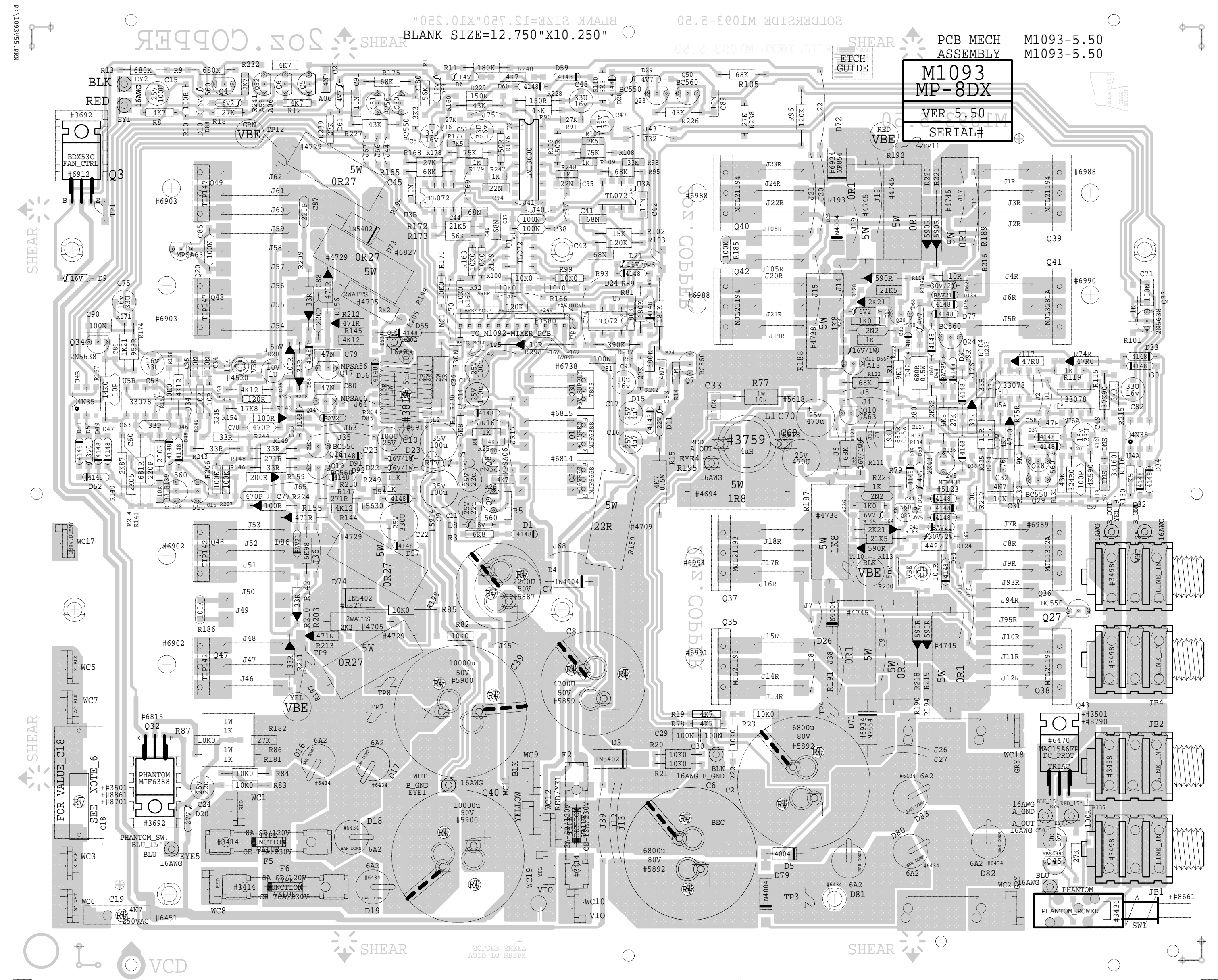
M1093.SCH\_DATABASE\_HISTORY

#	DATE	VER#	DESCRIPTION OF CHANGE
1	APR/18/00	2.80	PCN5150,248,249,250,251,252,253,254
2	MAY/30/01	2.90	PCN5150 NA PWR SUPPLY->24-08
3	NOV/26/01	2.90	PCN4973 R153, R205->R412
4	NOV/21/01	2.90	PCN5481 CORRECTING PWR SUPPLY
5	DEC/10/01	3.00	PCN4451 R172,22K->21K5,R173,47K->
6	MAY/29/03	3.10	SK R168 33K->27K
7	SEP/08/04	3.10	PCN6148,12A,7805->8A,7805
8	SEP/08/04	3.10	UPDATE_P0_FUSIBLE_RESISTORS



200 WATT AMP





PCB MECH ASSEMBLY  
M1093-5.50  
M1093-5.50

**M1093**  
**MP-8DX**

VER 5.50

SERIAL#

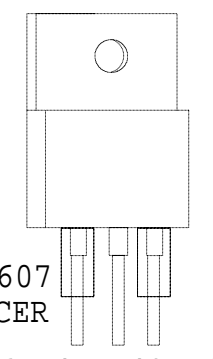
M1093.PCB\_DATABASE\_HISTORY

MODEL(S) :- MP8-DX

#	DATE	VER#	DESCRIPTION OF CHANGE
1	NOV/24/95	2.01	U3A&B CHG TL072-->NJM3404.LIMITER
2			LATCH-UP FIX;
3	NOV/28/95	2.10	PC #4964 C18 S; #5243 -->#5266
4	DEC/11/95	2.20	ADDED BRK HOLES FOR REG_XTR'S
5	DEC/13/95	2.30	PC#4966 ADD #8607_SPACERS_TO
6			Q46,Q47,Q48,Q49
7			PC#4973 R153 2K05-->4K12 1% #4774
8	FEB/06/96	2.40	PC#5019 1M+22N ADDED TO U2.-U3A/B
9			FROM NJM3404 TO TL072
10	JAN/21/97	2.41	PC#5265 RESISTORS TO FLAMEPROOF
11			SEE NOTE BELOW
12	97/01/29	3.00	CHG VBE MTG&ROUT FOR NEW H.S.
13	JUN/02/97		PC#5398 ADD EXTRA PAD FOR COIL
14	MAY/97		PC#5397 VBE_ADJUST 5MV
15	FEB/04/98	3.01	PC#5588 R11 150K->180K
16	MAR/05/98	4.00	PC#5598 GRND_CHANGED_ADD EYELET
17			FOR COIL
18	OCT/20/99	5.00	PC#6147 REDO JUMPERS FOR Q46,Q47
19			Q48 BREAKAWAY_BOARDS_MOVE TRACES
20			FOR Q20,Q27
21			PC#6148 ADD R249,R250,D91,D92
22	JAN/18/00		PC#6190 ADD FUSES F5,F6
23	APR/18/00	5.10	PC#6106 Q48,Q49 BDV64B->TIP147
24			Q47,Q46 BDV65B->TIP142
25	MAY/30/01	5.20	PC#6383 REPLACE R16,R17 WITH JR16,
26			JR17 J29->10R-1/8WFP(R29J)
27	NOV/26/01	5.30	PC#6202 R102 43K->15K,C42 68N->10N
28			R172 43K->22K,R173 100K->47K,C45_
29			68N->10N
30	DEC/10/01	5.40	PC#6491 R172 22K->21K5,R173 47K->
31			56K,R168 33K->27K
32	MAY/29/03	5.50	PC#6610 Q43 BT139->MAC15A6FP
33	SEP/08/04		UPDATE_TO_FUSIBLE_RESISTORS
34			V N
35			V N
36			V N
37			V N
38			V N
39			V N
40			V N
41			V N
42			V N
43			V N
44			V N
45			V N
46			V N
47			V N
48			V N
49			V N
50			V N

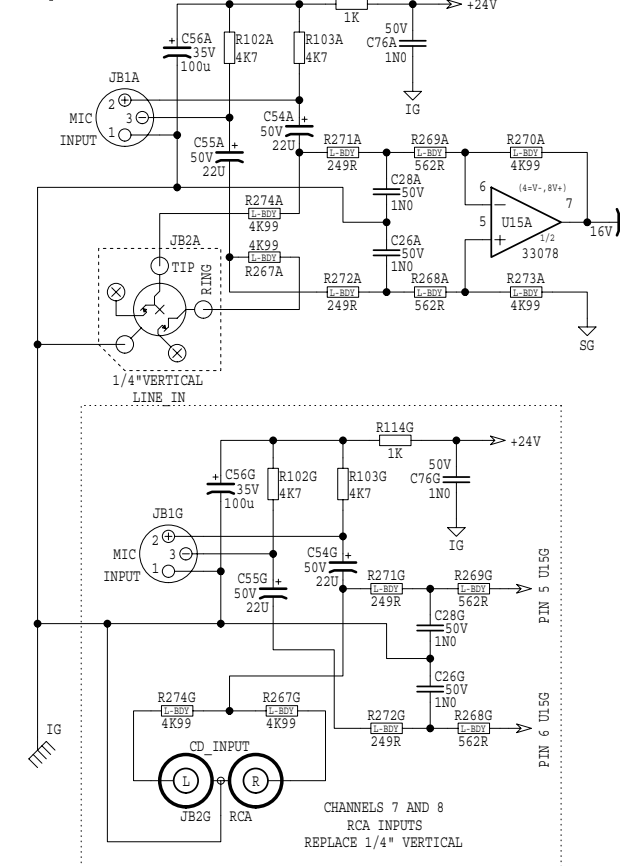
PRODUCTION NOTES

1. PUT IN WHT WIRE (EYE1) BEFORE C39 AND C40.
  2. THESE EYELETS ARE PUT IN FROM THE BOTTOM.
  3. THESE EYELETS ARE PUT IN FROM THE TOP.
  4. PUT #8613 CAP ON THERMISTOR R185, R186 THEN FOLD DOWN
  5. C18 NORTH AMERICAN PT#6435 22N 275VAC  
C18 EXPORT CE PTH#5266 680N 250VAC
  6. ADD #8607 SPACER TO Q46,Q47,Q48,Q49
  7. ▲ INDICATES FLAMEPROOF
  8. D22 D23 16V 1W
  - 9.
  - 10.
  11. Q46,Q47,Q48,Q49
- PC#5265 TO FLAMEPROOF R74R,R75R,R117,R126,R211,R210,R209  
R208,R159,R224,R155,R213,R156,R212,R154,R225,R128  
R125,R114,R220,R221,R219,R218,R113



U:\M1112V15.PRN

CHANNELS 1 TO 6



INPUTS

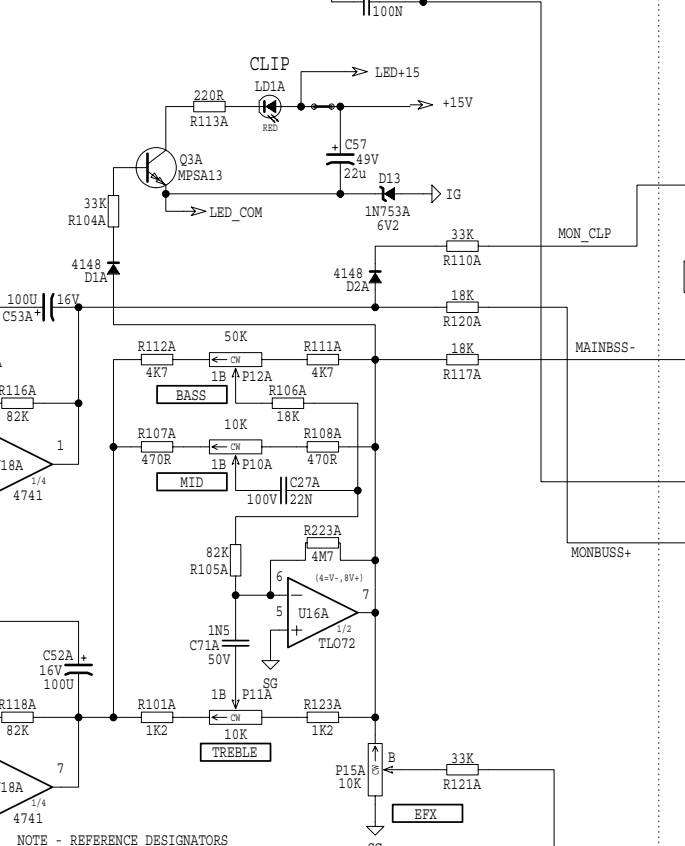
NOTE - REFERENCE DESIGNATORS  
 MOST PARTS IN CHANNEL 1 WITH SUFFIX A WILL EXIST IN CHANNELS 2-8 WITH SUFFIXES B-H. ANY PARTS WHICH ARE SHARED BY ADJACENT CHANNELS WILL HAVE THE SUFFIX BELONGING TO THE LOWER NUMBERED CHANNEL. I.E. IF U12A IS SHARED BY CHANNELS 1 AND 2, THERE WILL NOT BE A U12B.

M1112.SCH DATABASE HISTORY			
#	DATE	VER#	DESCRIPTION OF CHANGE
1	96/03/30	1.00	NEW
2	JAN/25/00	1.20	ADD POT LIST
3	OCT/24/00	1.30	PC#E337-C70A 330u-25V-330u-16V
4	FEB/15/01	1.40	PC#6309-C76A/G,C26A/G,C28A/G
5			1N5/200V->1N0/50V
6			PC#6383_ADD R16J,R43J,R56J,R66J
7	MAY/30/01	1.50	
8	D	N	N
9	D	N	N
10	D	N	N

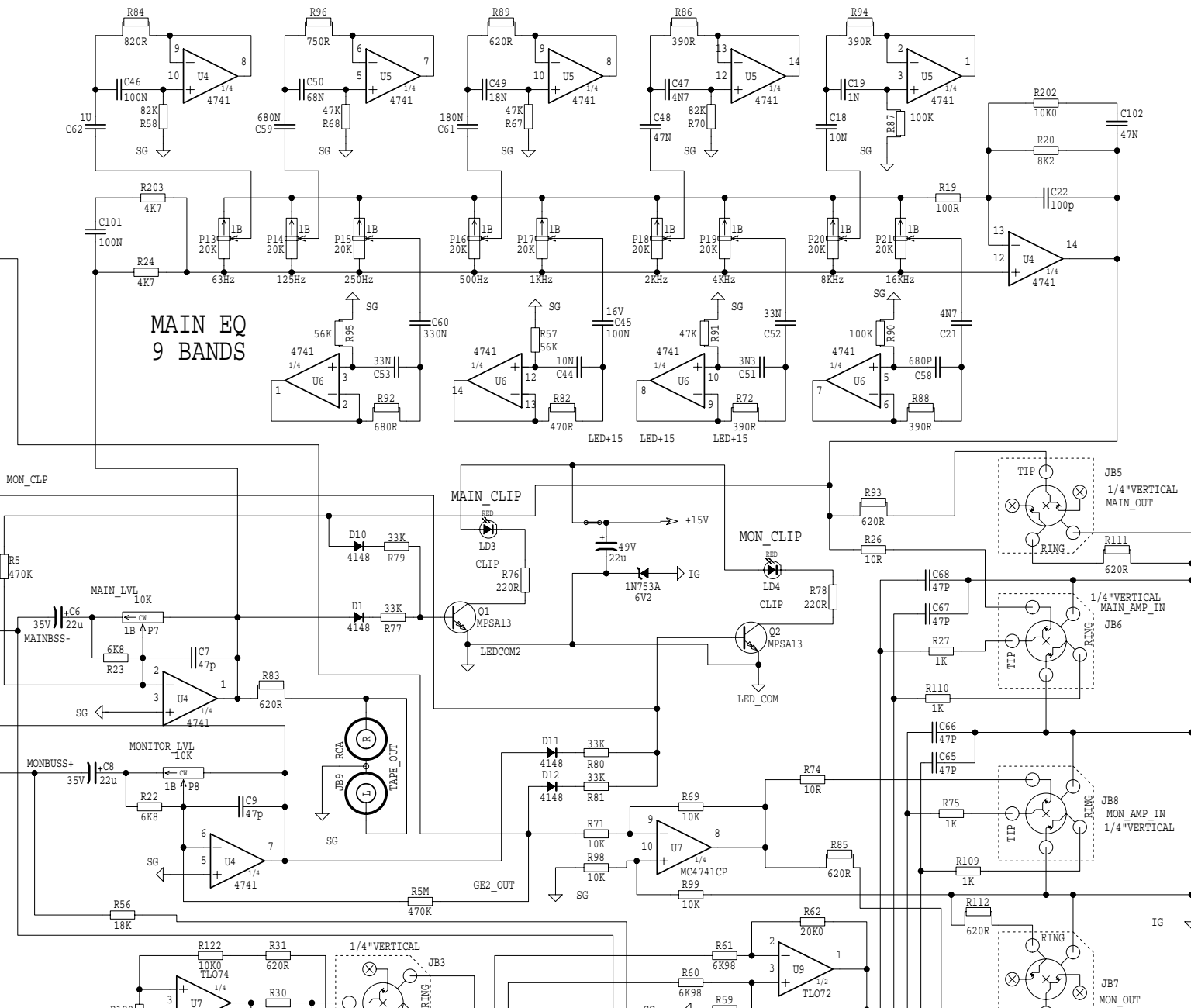
M1112.PCB POT LIST					
#	REF	FUNCTION	PART#	KNOB	AS OF
1	P15A	EFFECTS SND	#4566	#8395	JAN/2000
2	P11A	CHAN TREBLE	#4566	#8393	
3	P10A	CHAN MID	#4566	#8393	
4	P12A	CHAN BASS	#4566	#8393	
5	P14A	MONITOR SND	#4567	#8394	
6	P13A	CHAN GAIN	#4567	#8392	
7	P7	MAIN	#4566	#8392	
8	P8	MONITOR	#4566	#8394	
9	P9	EPX-MAIN	#4568	#8395	
10	P10	EPX-MONITOR	#4568	#8395	
11	P11	EFFECTS	#4581	#8397	
12	P12	MODIFY	#4581	#8397	
13	P13-P21	MAIN EQ	#3999		
14	P22-P26	MONITOR EQ	#3999		
15	D	N	N	N	D
16	D	N	N	N	D
17	D	N	N	N	D
18	D	N	N	N	D
19	D	N	N	N	D
20	D	N	N	N	D

YORKVILLE	DATE: MAY/30/2001	MODELS: MP-8DX (NEW)	SHEET 1 OF 2	SCH ISSUE: 1.50
	NAME: M1112.SCH	PCB#&VER: M1112	TITLE: MIXER/EQ/MASTER	

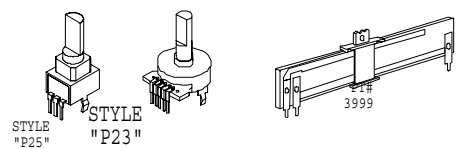
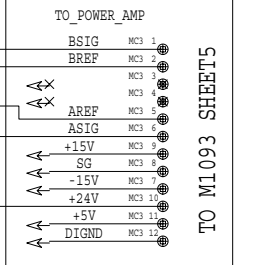
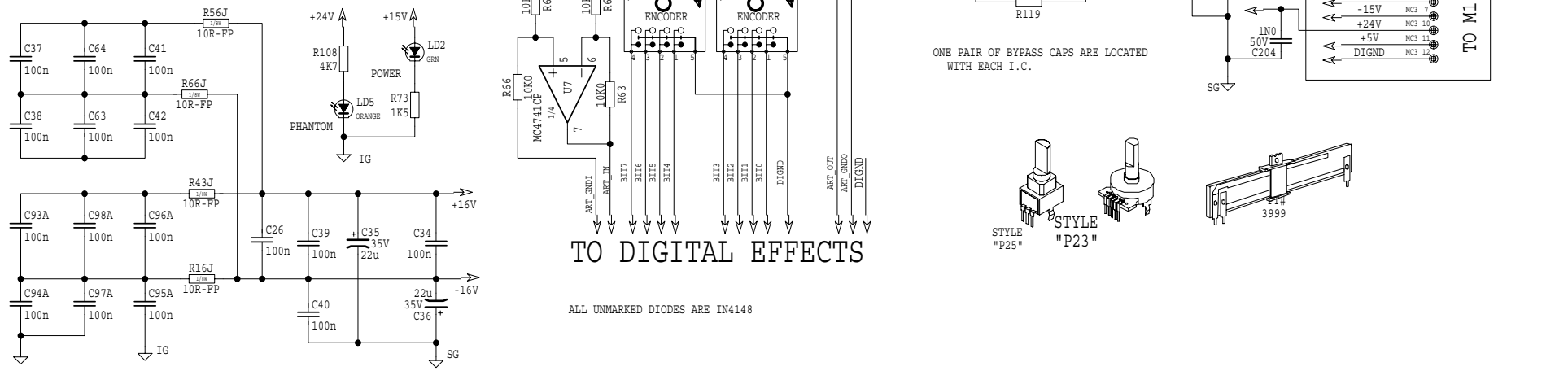
MONITOR EQ  
5 BANDS



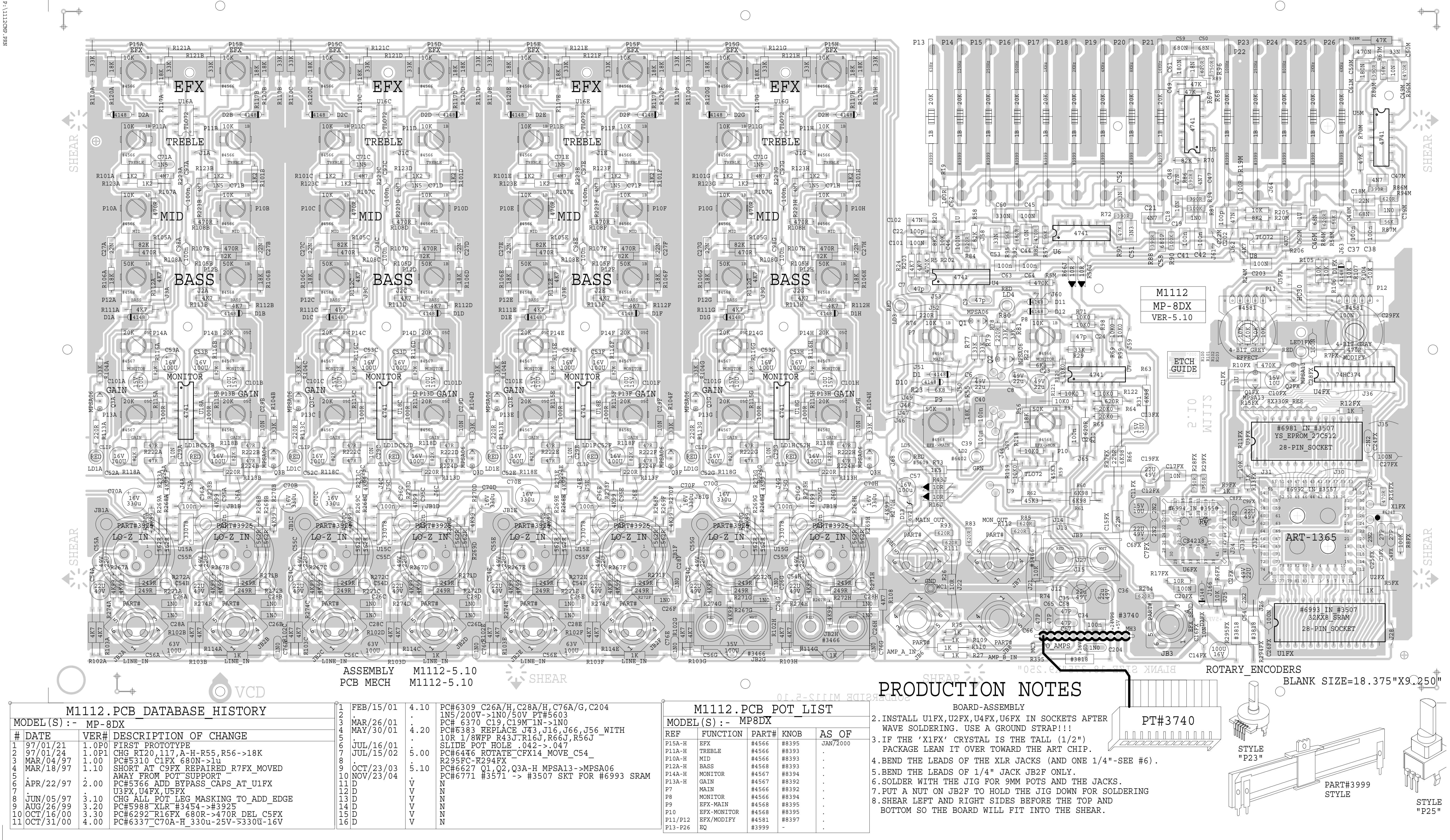
MAIN EQ  
9 BANDS



TO DIGITAL EFFECTS



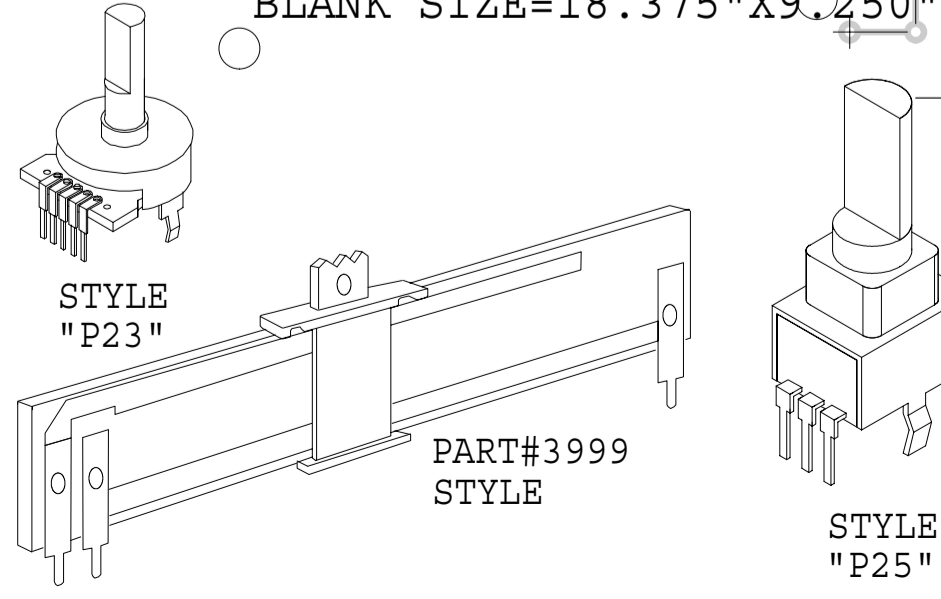
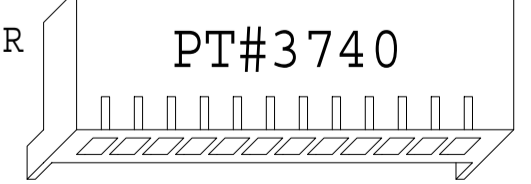
ALL UNMARKED DIODES ARE IN4148



ASSEMBLY M1112-5.10  
PCB MECH M1112-5.10

### PRODUCTION NOTES

- INSTALL U1FX, U2FX, U4FX, U6FX IN SOCKETS AFTER WAVE SOLDERING. USE A GROUND STRAP!!!
- IF THE 'X1FX' CRYSTAL IS THE TALL (1/2") PACKAGE LEAN IT OVER TOWARD THE ART CHIP.
- BEND THE LEADS OF THE XLR JACKS (AND ONE 1/4"-SEE #6).
- BEND THE LEADS OF 1/4" JACK JB2F ONLY.
- SOLDER WITH THE JIG FOR 9MM POTS AND THE JACKS.
- PUT A NUT ON JB2F TO HOLD THE JIG DOWN FOR SOLDERING
- SHEAR LEFT AND RIGHT SIDES BEFORE THE TOP AND BOTTOM SO THE BOARD WILL FIT INTO THE SHEAR.



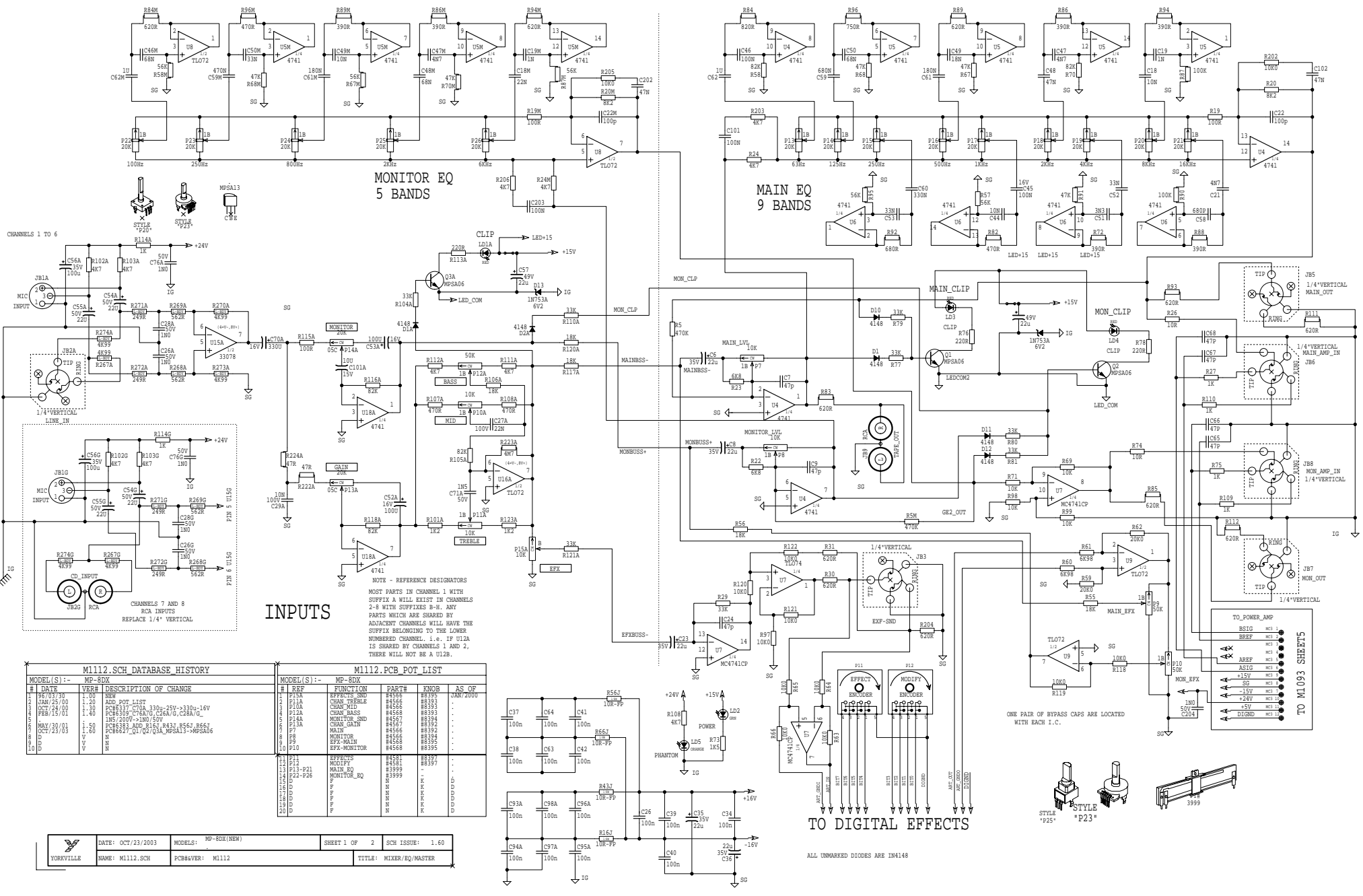
MODEL(S) :-	MP-8DX		
#	DATE	VER#	DESCRIPTION OF CHANGE
1	97/01/21	1.0P0	FIRST PROTOTYPE
2	97/01/24	1.0P1	CHG R120, 117, A-H-R55, R56->18K
3	MAR/04/97	1.00	PC#5310 C1FX 680N->1u
4	MAR/18/97	1.10	SHORT AT C9FX REPAIRED_R7FX_MOVED AWAY FROM POT SUPPORT
5	APR/22/97	2.00	PC#5366 ADD BYPASS_CAPS_AT_U1FX U3FX, U4FX, U5FX
6			
7			
8	JUN/05/97	3.10	CHG ALL POT_LEG MASKING_TO_ADD_EDGE
9	AUG/26/99	3.20	PC#5988_XLR_#3454->#3925
10	OCT/16/00	3.30	PC#6292_R16FX 680R->470R DEL C5FX
11	OCT/31/00	4.00	PC#6337_C70A-H_330u-25V->330u-16V

REF	FUNCTION	PART#	KNOB	AS OF
P15A-H	EFX	#4566	#8395	JAN/2000
P11A-H	TREBLE	#4566	#8393	
P10A-H	MID	#4566	#8393	
P12A-H	BASS	#4566	#8393	
P14A-H	MONITOR	#4567	#8394	
P13A-H	GAIN	#4567	#8392	
P7	MAIN	#4566	#8392	
P8	MONITOR	#4566	#8394	
P9	EPX-MAIN	#4568	#8395	
P10	EPX-MONITOR	#4568	#8395	
P11/P12	EPX/MODIFY	#4581	#8397	
P13-P26	EQ	#3999		

DATE	DESCRIPTION	BY
FEB/15/01	4.10	PC#6309 C26A/H, C28A/H, C76A/G, C204 1N5/200V->1N0/50V PT#5603
MAR/26/01		PC# 6370 C19, C19M 1N->1N0
MAY/30/01	4.20	PC#6383 REPLACE J43, J16, J66, J56 WITH 10R 1/8WFP R43J, R16J, R66J, R56J - SLIDE POT HOLE .042->.047
JUL/16/01		PC#6446 ROTATE_CFX14_MOVE_C54 R295FC-R294FX
JUL/15/02	5.00	PC#6627 Q1, Q2, Q3A-H MPSA13->MPSA06
OCT/23/03	5.10	PC#6771 #3571 -> #3507 SKT FOR #6993 SRAM
NOV/23/04		
	V	N
	V	N
	V	N
	V	N
	V	N
	V	N
	V	N
	V	N
	V	N
	V	N
	V	N
	V	N
	V	N

BOARD-ASSEMBLY

ROTARY ENCODERS  
BLANK SIZE=18.375"X9.250"

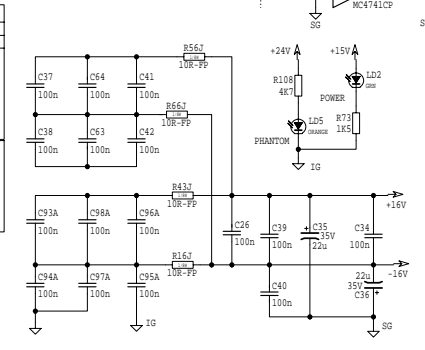


**M112.SCH\_DATABASE\_HISTORY**

#	DATE	VER#	MP-8DX	DESCRIPTION OF CHANGE
1	10/21/00	1.00	NEW	ADD_PPT_LIST
2	JAN/25/00	1.20		PCB3331 C10A 330u 25V +330u 16V
3	OCT/24/00	1.30		PCB3330 C+RNG C16A/G, C28A/G
4	FEB/15/01	1.40		1M 220K +300 SW
5	MAY/30/01	1.50		PCB3331 ADD_R161 R431 R561 R661
6	OCT/29/03	1.60		PCB3331_Q1 Q2 Q3A_MPGA13+MP8A06
7	D	V		M
8	D	V		M
9	D	V		M
10	D	V		M

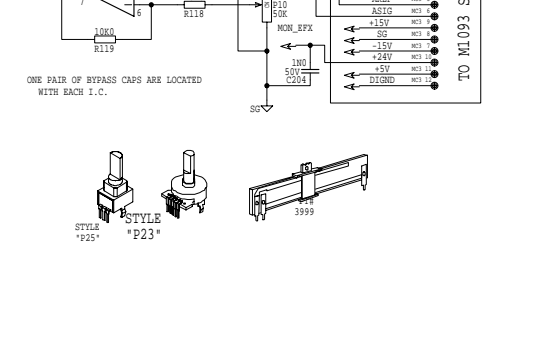
**M112.PCB\_POT\_LIST**

#	REF	FUNCTION	PART#	KNOB	AS OF
1	R125A	EFFECTS_SND	R4595	R8395	NEW
2	R111A	CHAN_TREBLE	R4566	R8393	.
3	R112A	CHAN_MID	R4567	R8394	.
4	R113A	CHAN_BASS	R4568	R8395	.
5	R114A	MONITOR_SND	R4569	R8396	.
6	R115A	CHAN_GAIN	R4570	R8397	.
7	R116A	MIXER	R4571	R8398	.
8	R117A	MONITOR	R4572	R8399	.
9	R118A	EFX_MAIN	R4573	R8400	.
10	R119A	EFX_MONITOR	R4574	R8401	.
11	P111	EFFECTS	P4581	P8391	.
12	P112	MONITOR	P4582	P8392	.
13	P113-P11	MAIN_EQ	P3999	P8393	.
14	P114-P16	MONITOR_EQ	P3999	P8393	.
15	M	M	M	M	.
16	M	M	M	M	.
17	M	M	M	M	.
18	M	M	M	M	.
19	M	M	M	M	.
20	M	M	M	M	.



TO DIGITAL EFFECTS

ALL UNMARKED DIODES ARE 1N4148

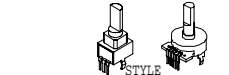


MONITOR EQ 5 BANDS

MAIN EQ 9 BANDS

TO POWER AMP

TO M1093 SHEETS



ONE PAIR OF BYPASS CAPS ARE LOCATED WITH EACH I.C.

TO M1093 SHEETS

TO M1093 SHEETS

TO M1093 SHEETS

TO M1093 SHEETS

TO M1093 SHEETS

TO M1093 SHEETS

TO M1093 SHEETS

TO M1093 SHEETS

TO M1093 SHEETS

TO M1093 SHEETS

TO M1093 SHEETS

TO M1093 SHEETS

TO M1093 SHEETS

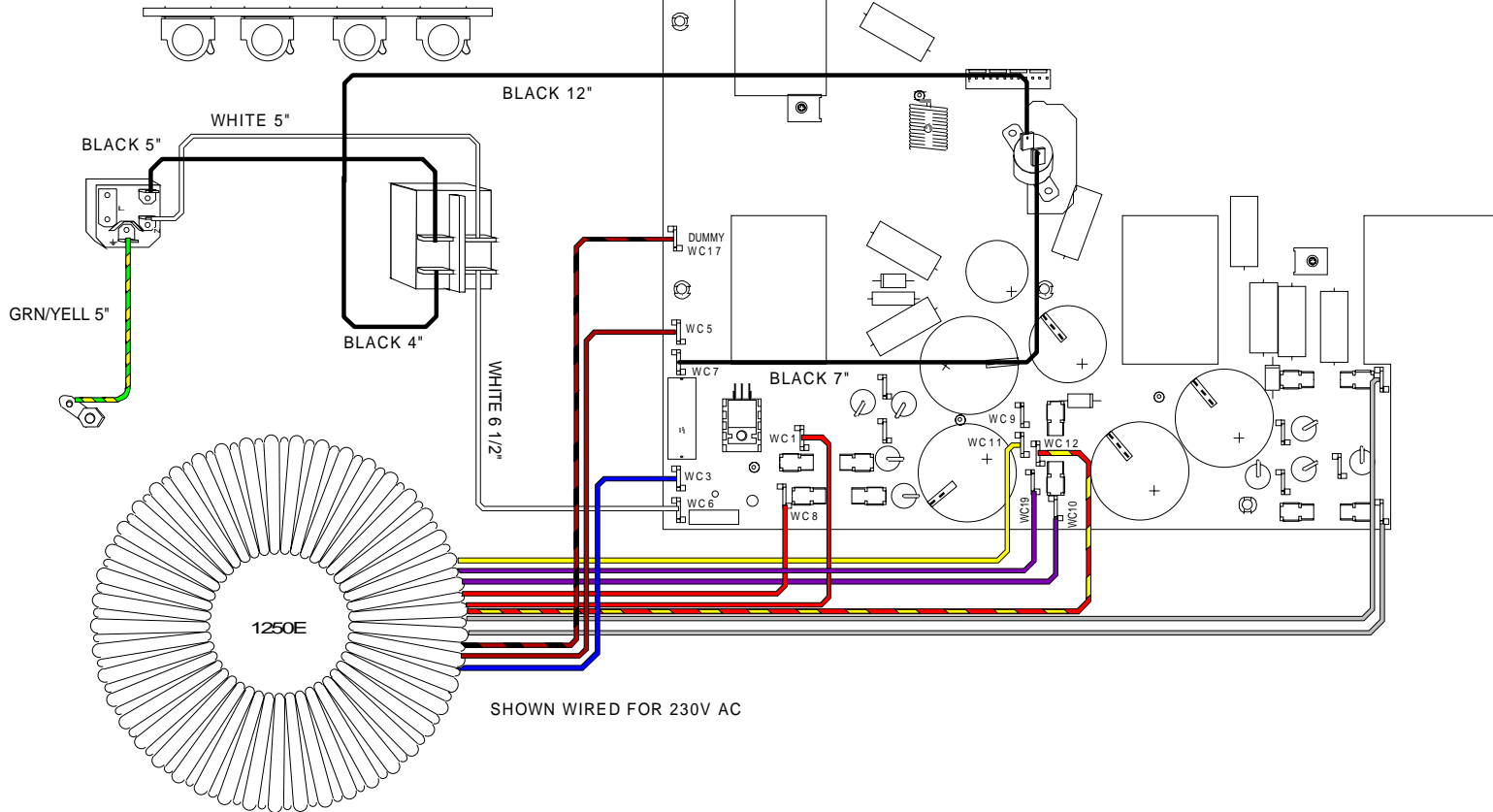
TO M1093 SHEETS

TO M1093 SHEETS

TO M1093 SHEETS

TO M1093 SHEETS

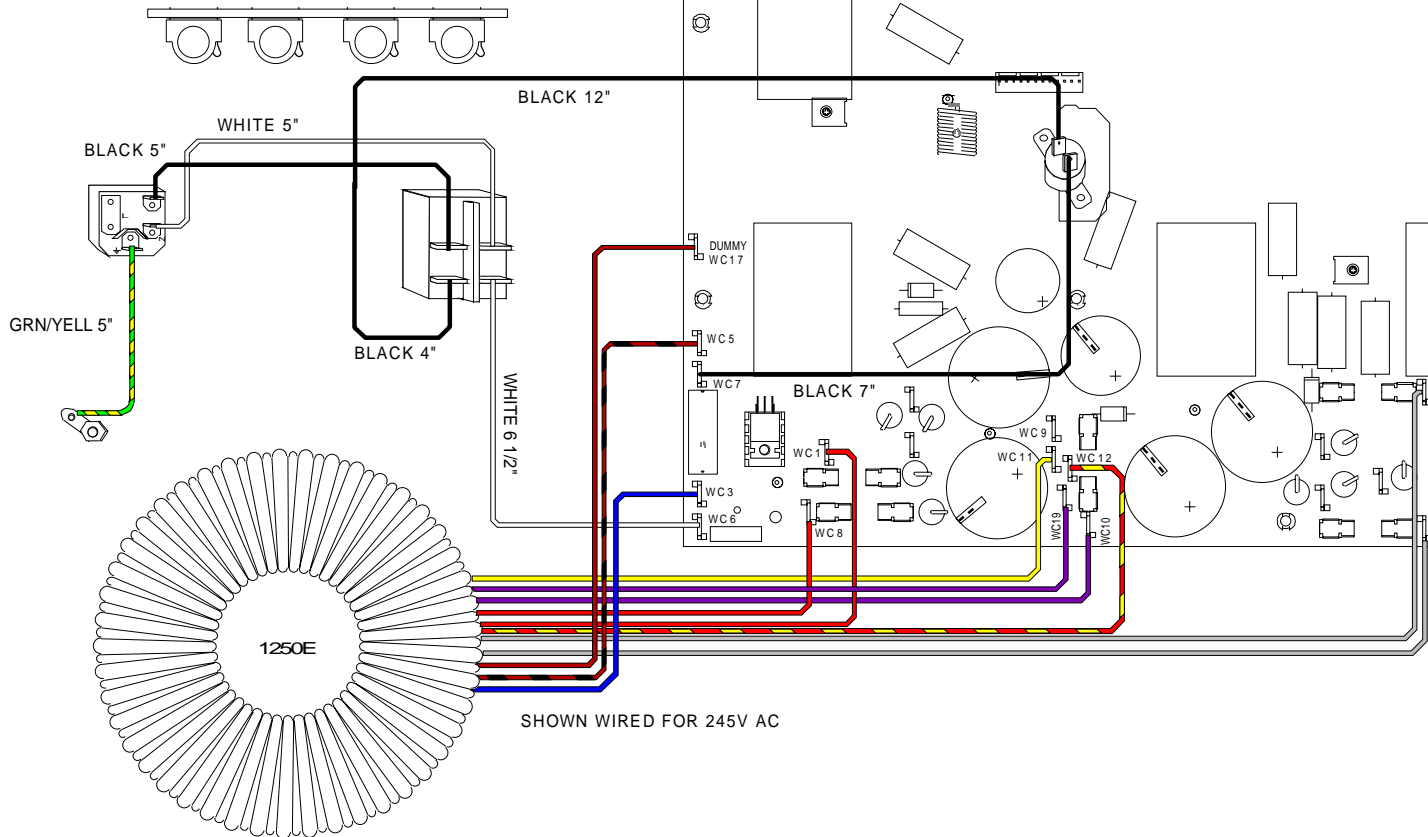
MP-8DXCE AC WIRING  
FEB. 12, 1999

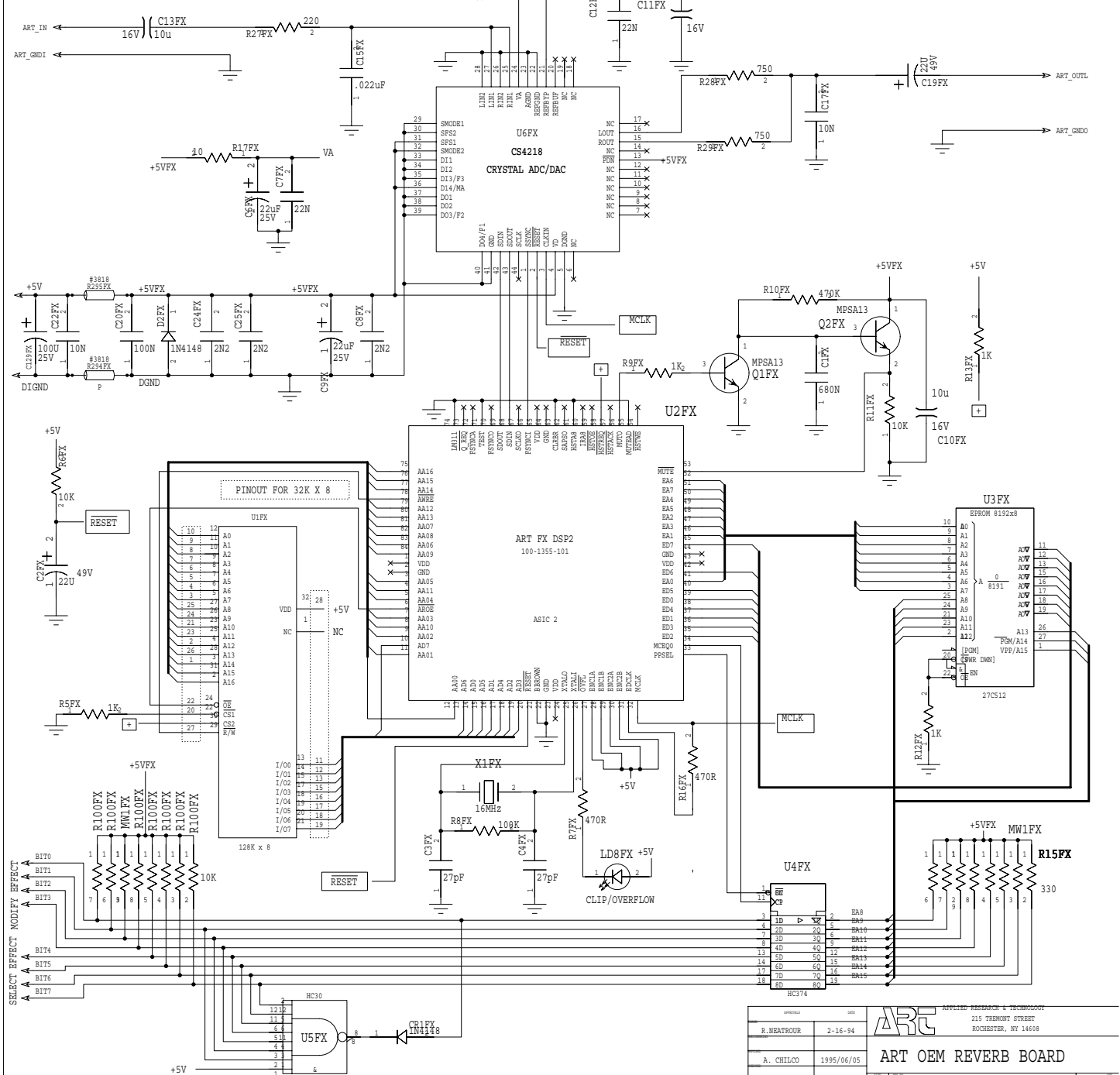


SHOWN WIRED FOR 230V AC



MP-8DXCE AC WIRING  
FEB. 12, 1999





REVISED		DATE		BY		APPROVED	
R. NEATROUR		2-16-94		A. CHILCO		1995/06/05	
12-1-94				M1092-FX			
400-4001-100				4 OF 4			

**ART**  
 APPLIED RESEARCH & TECHNOLOGY  
 215 TREMONT STREET  
 ROCHESTER, NY 14608

**ART OEM REVERB BOARD**